
*The Journey of the
Lifelong Learner*

**George Betts
University of Northern Colorado
970-351-1657**

george.betts@unco.edu

Alpspublishing.com



Quotable

The real voyage of discovery consists
not of seeking new landscapes,
but in having new eyes...

~ Marcel Proust

Carl Rogers

The degree to which I create relationships which facilitate the growth of others as separate persons is a measure of the growth I have achieved in myself...

Carl Rogers

Facilitative Characteristics

Empathy

Congruence (Genuineness)

Unconditional Positive Regard

Concreteness

An Autonomous Learner

An autonomous learner, by definition, is “one who solves problems or develops new ideas through a combination of divergent and convergent thinking and functions with minimal external guidance in selected areas of endeavor.”

(Betts & Knapp, 1981)

What the Gifted May Become . . .
Models That Support The 21st Century
Autonomous Learner

Maslow	Self-Actualizing Person
Rogers	Fully-Functioning
Torrance	The Beyonders
Dabrowski	Positive Disintegration
Kohlberg	Moral Development
Betts/Kercher	Autonomous Learner
Seligman	Positive Psychology
Dweck	Mindset

E. Paul Torrance

The Beyonders

- Delight in deep thinking
- Tolerance of mistakes
- Love of one's work
- Clear Purpose
- Comfortability as a minority of one
- Being different
- Not being well-rounded
- Sense of mission in life
- Courage to be creative

The Creative Child & Adult Quarterly
Volume XVI, No. 2 Summer, 1991

Facilitating 21st Century Lifelong Learners: What We Need To Do

- Positive, Nourishing Environment
- Unconditional Positive Regard
- Emotional Bonding Through Family Involvement & Ownership
- Passion-Based Learning
- Autonomy vs. Dependency (Mindset)

Characteristics of 21st Century Learners

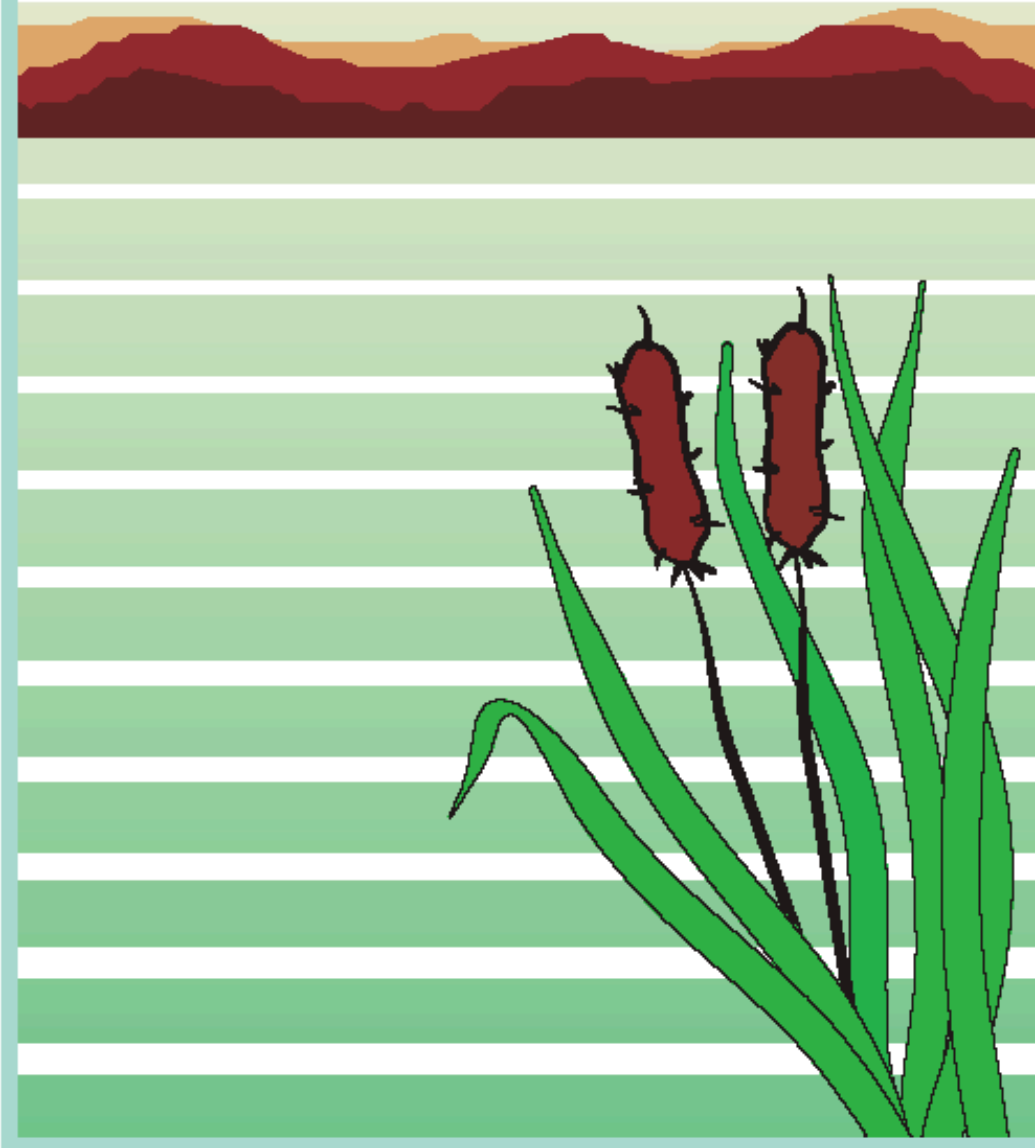
- Understanding & Acceptance of Self
- Understanding & Acceptance Others
- Mindset (growth)
- Effective Interaction (communication skills)
- Problem-Finding & Problem-Solving Abilities

Characteristics of 21st Century Learners

- Creativity & Independence
- Learning Resourcefulness
- Passions Areas of Learning
- Commitment to the “Difficult”
- An attitude toward impacting the world in a positive way
- Ability to see learning as a lifelong journey

**The world is open
to those who give . . .**

© george betts



**Before I can love you,
I must love myself.**

© **george betts**



**The greatest gift
you can give me is
the opportunity
for me to be me
and for me
to let you be you.**

© **george betts**

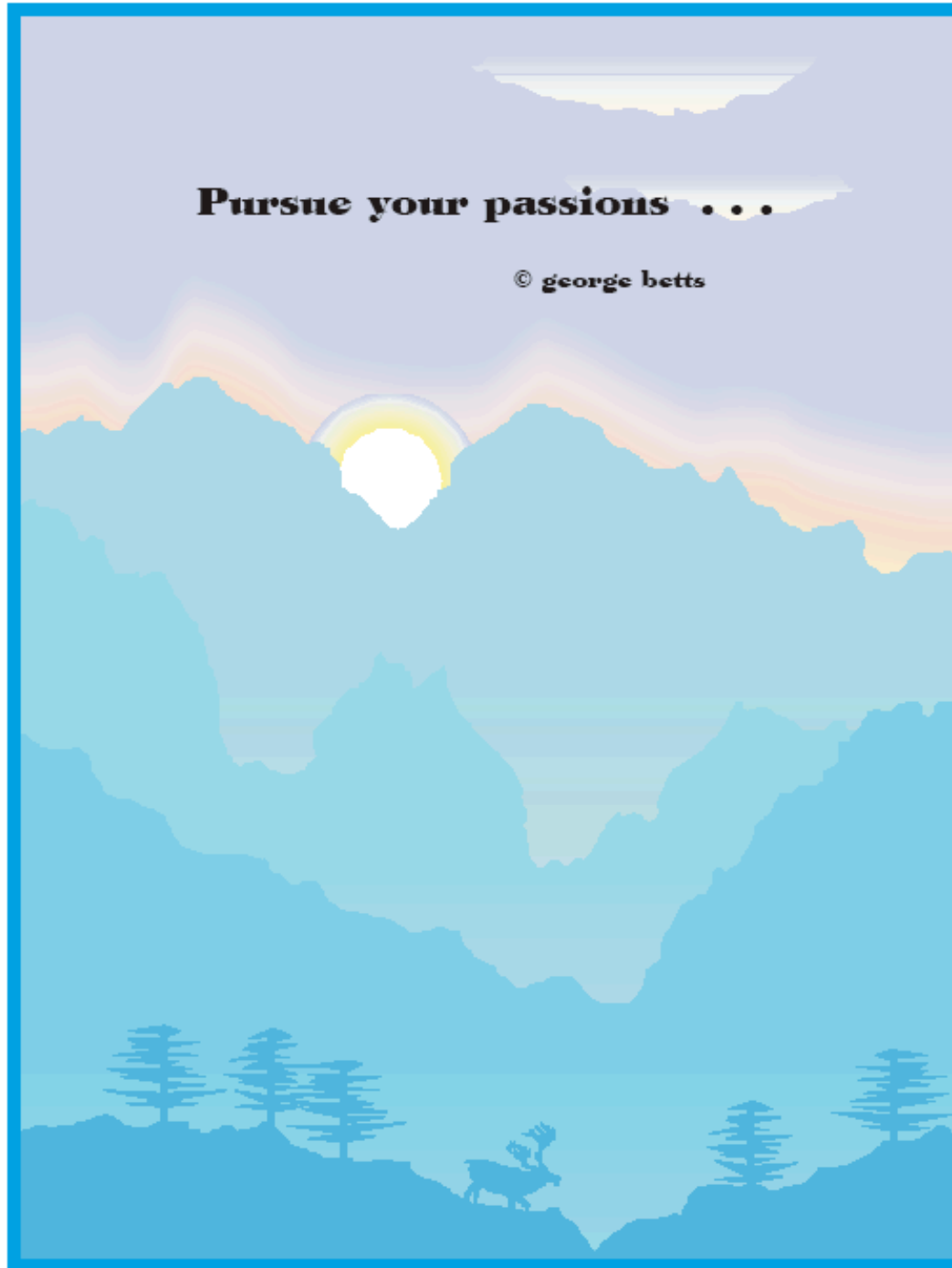


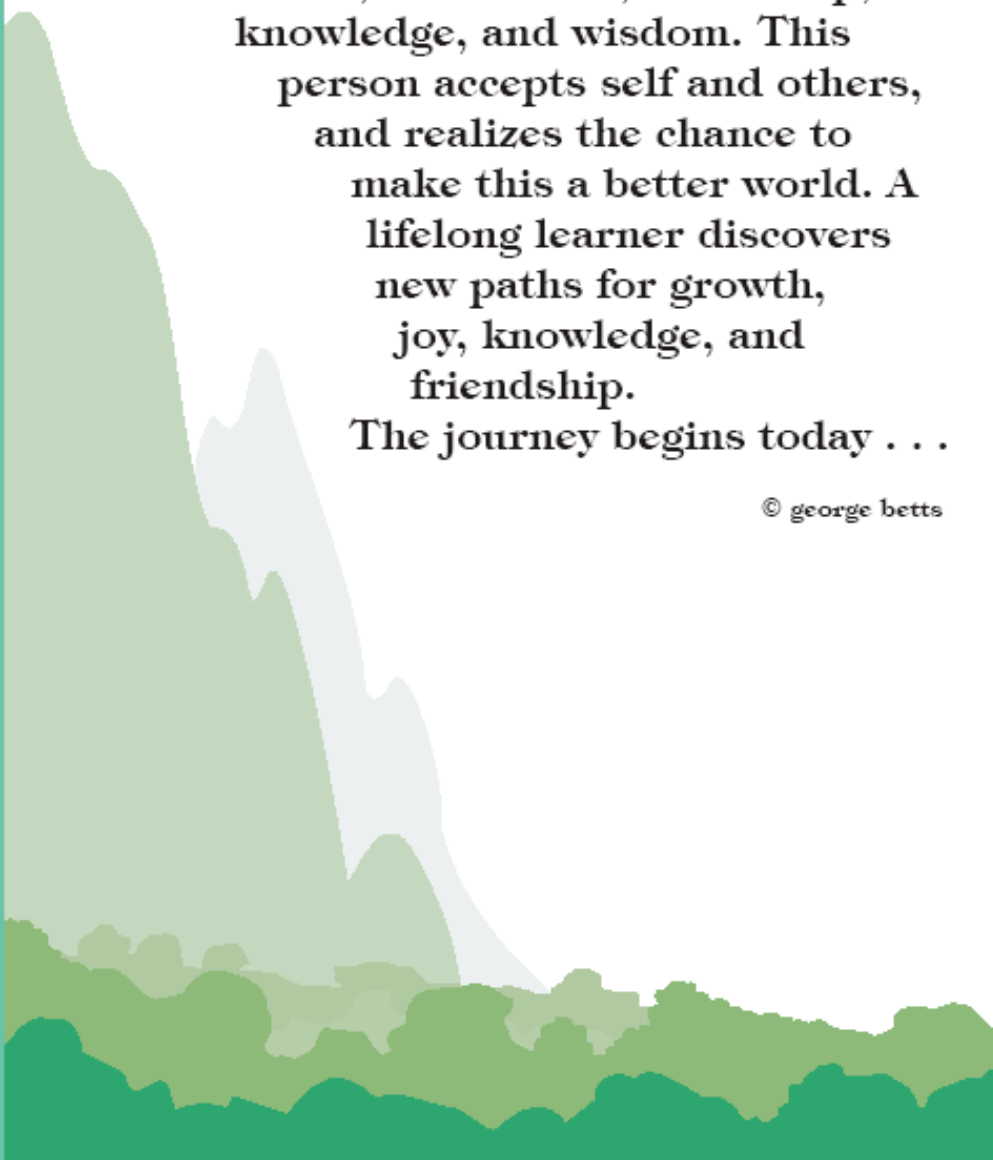
**True motivation
Is as mysterious
as life itself.
It must begin within . . .**

© *george betts*

Pursue your passions . . .

© george betts





A lifelong learner is one who loves the moment, seeks truth, friendship, knowledge, and wisdom. This person accepts self and others, and realizes the chance to make this a better world. A lifelong learner discovers new paths for growth, joy, knowledge, and friendship.
The journey begins today . . .

© george betts